

Unlock the benefits of The VMCC

VINTAGE & CLASSIC MOTORCYCLE

WE
ARE
75!



HAS YOUR
MACHINE
COME OF
AGE?



Our Heritage

*Founded in 1946 by Titch Allen OBE
and still going strong*



On a wet and windy day in April 1946, 38 motorcyclists gathered at the Lounge Cafe on the Hog's Back, near Guildford. Their leader was CE 'Titch' Allen, his nickname inspired by his diminutive height.

Motorcycles were Titch's life. He had started riding aged 12 and hadn't stopped since, serving as despatch rider and instructor during World War II.

In 1942 he hit on an idea – in those days, old bikes were seen as old corks, only ridden by those who couldn't afford anything better. So why not form a club, not just to preserve the vintage machines, but actively ride and race them? Four years later, the Vintage Motor Cycle Club – the VMCC – was born.

It grew fast, but by the late 1950s the VMCC faced a dilemma. It catered fine for the vintage and veteran bikes, but their riders were getting older and the Club needed fresh blood. The 25-year rule was the result. Now the VMCC would accept any bike, any make, which was over 25 years old.

It's this – the 25-year rule – which today enables the VMCC to cater for every powered two-wheeler: 1895-1996; flat tank veterans to alloy-framed sports bikes; cyclemotors to superbikes. Diversity is celebrated – we are a broad church.

Titch Allen OBE died in 2010 and his son Steve carries his legacy in the VMCC:

"My father's greatest achievement (apart from his family) was the creation of the VMCC. His passion lives on in the 13,000+ members who continue to enjoy the sight, smell and sound of motorcycles from all ages and all corners of the globe."

What we are about

- The largest vintage and classic bike club in the world
- All welcome – you don't even need a motorcycle to be a member
- We ride motorcycles, scooters and cyclemotors over 25 years old
- The biggest programme of vintage and classic runs, meets and socials, all over the UK

Join the VMCC, and you are part of a massive motorcycle community. We're passionate about bikes and steeped in motorcycling. Have a question? Ask a VMCC expert!

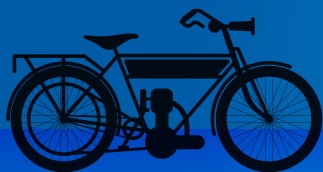
We are the largest international club with local links – wherever you live, you won't be far from one of our 86 Sections who organise runs, meets and social events. Our racing Sections – British Historic Racing, Sprint, Grasstrack and Speedway – run many vintage race events through the year.

Looking for hard to find spares? We will be able to help. Want to enjoy your bike with like-minded people? That's us. Runs, racing, spares, knowledge and an incurable passion for motorcycles.

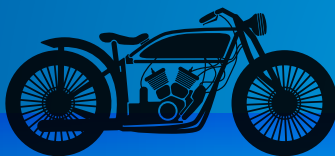


www.shop.vmcc.net

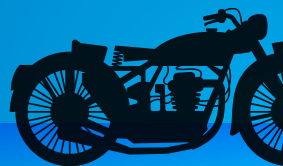
The evolution of motorcycles. *Has yours*



1910s



1920s



1930s

1940s

1950s

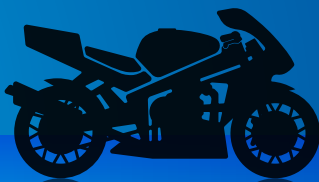
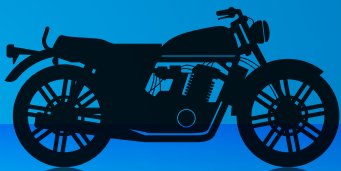
- Over 13,000 members – the largest vintage and classic bike club in the world
- 64 affiliated clubs in 32 countries worldwide
- All vintage and classic machines over 25 years old welcome
- Monthly A4 colour magazine posted every month
- Our size gives members the best value club insurance on the market
- Especially low insurance rates for new and returning motorcyclists
- Add your modern bike to your classic policy
- 1000 organised riding events a year – historic racing, road runs and more
- 86 local sections covering the whole UK – there's one near you!
- World leading motorcycle reference library – books, magazines, factory records
- Web shop for parts and memorabilia
- DVLA approved motorcycle dating & registration
- One club for all your bikes – 1895-1996 – mix and match



www.shop.vmcc.net

come of age?

Unlock the benefits of The VMCC.

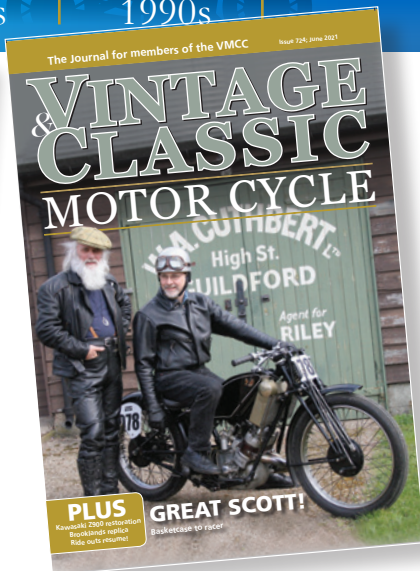


1960s

1970s

1980s

1990s



Full colour monthly magazine – delivered to your door every month

- What's On, News and Events
- Restoration stories
- Technical advice
- Gems from the archives
- Travel features
- Members bikes for sale

Vintage & Classic Motorcycle reflects the breadth and depth of the VMCC. It covers everything from the earliest motorised bicycles to race replicas of the 1980s and '90s. Barn find stories, painstaking restorations, epic rides and 'how to' features – it's all here. Written by VMCC members and included with every membership, it's your open door to the world of the VMCC.

01283 540557

A Section near you

North East

East Yorkshire
Mid Lincs
North East
Northumbrian
Reivers
Sheffield & S Yorks
South Durham
Wakefield & W Yorks

North West

Blackpool & District
Central Lancashire
Cheshire & N Wales
Cheshire Cats
East Lancs
IOM
Lakeland
Manchester & High Peak
North West
Pennine
Shropshire
Snowdonia
South Cumbria Group

Anglia

Anglian
Bedfordshire
Essex
East Herts
Ipswich & Suffolk
Kings Lynn
Northampton
Norwich & District
South Lincs
Touring

North Midlands

Burton & District
Ironmasters
North Birmingham
North Staffs
Midland
Notts & Derby
Taverners

South Midlands

Banbury
Berkshire
Chiltern
Cotswold
Flat Tank
North Cotswold
Oxford
South Cotswold
Swindon Moonrakers
Warwickshire
West Wiltshire
Worcestershire

South East

Brooklands
East Sussex
Goodwood
Isle of Wight
London
Men of Kent
South Hants
Surrey & Sussex
West Kent

South West

Bournemouth & New Forest
Bristol
Cornwall
Dartmoor
Devon
Dorset
East Devon
North Tamar Group
Somerset
South Dorset
Stonehenge
Wessex V & V

Northern Ireland

Northern Ireland

Scotland

Auld Reekie Edinburgh
Central Scottish
Clyde Valley
Glasgow
Highland
N E Scottish
Stirling Castle
West Highland

Wales

Gwent
Hereford & Mid Wales
South Wales
Swansea & District
West South Wales

Join now

membership@vmcc.net

01283 540557 www.vmcc.net

www.shop.vmcc.net



Membership Application

PLEASE FULLY COMPLETE (IN BLOCK CAPITALS)

Title: Forename: Surname:

Date of Birth:

Address:

Post Town: Postcode:

Email: Telephone:

I also wish to enrol the following member(s) who reside at the same address (£8.00 each)

Title: Forename: Surname:

Date of Birth:

I wish to pay by cash, cheque or postal order (payable to 'VMCC'), Debit Card (Maestro or Solo) or Credit Card - Delete as appropriate. (Please do not send cash by post.)

Card No:

Start Date:

Expiry Date:

Maestro Issue No:

CVC No:

Amount (see rates overleaf) £

Signature: Date:

By completing this form you are confirming that you are consenting to the VMCC holding and processing your personal data in line with the VMCC privacy policy which is available at vmcc.net/privacy.

I hereby apply to become a member of The Vintage Motor Cycle Club Ltd a company registered in England & Wales Number 1570648

Registered address: Allen House, Wetmore Road, Burton upon Trent, Staffordshire, DE14 1TR

I agree to abide by the Club's constitution available on vmcc.net

	Standard Membership	With Email	Pay by Direct Debit	Pay by DD and supply an Email Address
UK Full Membership	£40	£39	£38	£37
EU Full Membership	£56	£55	£54	£53
Rest of World Full Membership	£62	£61	£60	£59
Family Membership supplement	£10	n/a	n/a	n/a

Instruction to your bank or building society to pay by Direct Debit



Please fill in the whole form using a ball point pen and send to:
VMCC, Allen House, Welmore Road, Burton On Trent DE14 1TR

Name and full postal address of your bank or building society

To: The Manager	Bank/building society
Address	
Postcode	

Name(s) of account holder(s)

--	--	--	--	--	--	--	--	--	--

Bank/building society account number

--	--	--	--	--	--	--	--	--	--

Branch sort code

--	--	--	--	--	--

Service user number

7	6	8	2	1	6
---	---	---	---	---	---

Reference

--	--	--	--	--	--	--	--	--	--	--	--	--	--	--	--	--	--	--	--

FOR The Vintage Motor Cycle Club OFFICIAL USE ONLY
This is not part of the instruction to your bank or building society.

Instruction to your bank or building society

Please pay The Vintage Motor Cycle Club Direct Debits from the account detailed in this Instruction subject to the safeguards assured by the Direct Debit Guarantee. I understand that this instruction may remain with The Vintage Motor Cycle Club and, if so, details will be passed electronically to my bank/building society.

Signature(s)

Date

Banks and building societies may not accept Direct Debit Instructions for some types of account. This Guarantee should be detached and retained by the payer.

The Direct Debit Guarantee



- This Guarantee is offered by all banks and building societies that accept instructions to pay Direct Debits.
- If there are any changes to the amount, date or frequency of your Direct Debit The Vintage Motor Cycle Club will notify you 10 working days in advance of your account being debited or as otherwise agreed. If you request The Vintage Motor Cycle Club to collect a payment, confirmation of the amount and date will be given to you at the time of the request.
- If an error is made in the payment of your Direct Debit, by The Vintage Motor Cycle Club or your bank or building society, you are entitled to a full and immediate refund of the amount paid from your bank or building society.
 - If you receive a refund you are not entitled to, you must pay it back when The Vintage Motor Cycle Club asks you to.
- You can cancel a Direct Debit at any time by simply contacting your bank or building society. Written confirmation may be required. Please also notify us.

